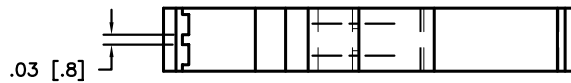
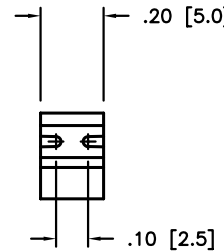
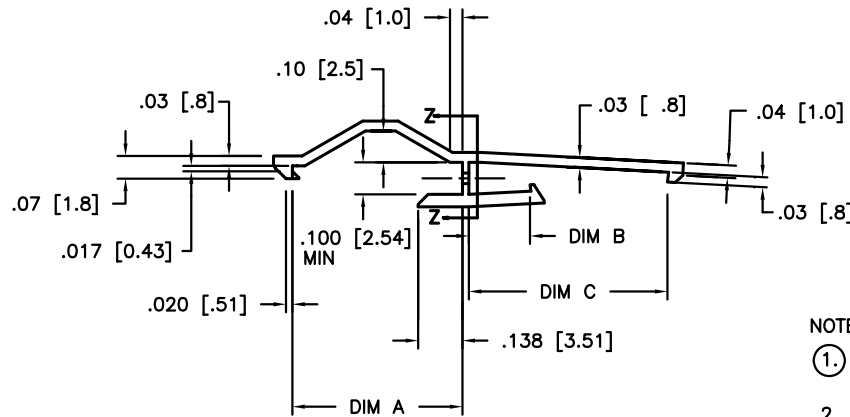


PRODUCT NUMBER	DIM A	DIM B	DIM C	APPLICATION	NOTES
78242-001	.53/13.5	.191/4.85	.62/15.7	MINI LATCH TO CLINCHER	
78242-001LF	.53/13.5	.191/4.85	.62/15.7	MINI LATCH TO CLINCHER	NOTE 3
78242-002	.53/13.5	.157/4.00	.55/14.0	MINI LATCH RECEPTACLE TO MINI LATCH PIN	
78242-002LF	.53/13.5	.157/4.00	.55/14.0	MINI LATCH RECEPTACLE TO MINI LATCH PIN	NOTE 3
78242-003	.59/14.9	.191/4.85	.620/15.7	CLINCHER RECEPTACLE TO CLINCHER PIN	
78242-003LF	.59/14.9	.191/4.85	.620/15.7	CLINCHER RECEPTACLE TO CLINCHER PIN	NOTE 3



NOTES:

1. MATERIAL: PBT, UNREINFORCED, FLAME RETARDANT PER UL94 V-0, COLOR: BLUE.
2. ALWAYS APPLY LATCH TO PIN CONNECTOR FIRST TO FACILITATE ASSEMBLY.
3. PART NUMBERS WITH AN LF SUFFIX MEET EUROPEAN UNION DIRECTIVES AND OTHER COUNTRY REGULATIONS AS DESCRIBED IN GS-22-008.
4. THIS PRODUCT IS NOT INTENDED TO BE EXPOSED TO MANUFACTURING SOLDERING PROCESSES.

mat'l. code SEE NOTE 1				surface ASME Y14.5 ✓ / tolerance ASME Y14.5		projection INCH/MM		product family BERGCON ACCESSORIES	
ltr	ecn no	dr	date	tolerances unless otherwise specified		INCH/MM		title	
C	V40999	HTB	1994-06-18	angles	XX±.01/XX±.03	scale 2:1		LATCH FOR FLYING CONNECTION SINGLE ROW	
D	V41244	HTB	1994-08-24		XXX±.005/XX±.01			dwg no	
E	V41721	MSC	1994-12-08	0°±2'	XXXX±.0020/XXX±.0051			sheet 1 of 1 size	
F	V50169	HTB	1995-01-20	dr	M.CLOUSER	1994-06-18		78242	
G	V00492	RGD	2000-04-18	engr	T. HANNA	1994-06-18		A4	
H	M06-0213	MHT	2006-06-05	chr	J.MURPHY	1994-06-18		type Product Customer Drawing	
J	V06-1200	HTB	2006-12-18	appd	T.HANNA	1994-06-18			
sheet	revision	J							
index	sheet	1							